

X1476H507  
Jade beads  
and  
1372H547  
Gold Patina  
chain

# THE BEADERY® Quick & Easy elements® Chain Necklace

You can make a stylish necklace quickly and easily by choosing from The Beadery® Elements™ beads and accessories line. Using any of our trendy color mixes, along with our Quick Crimp Necklace Chain, you will surely have success.

## Materials needed to make one Necklace:

- 1 package X1476H elements® Large Jewelry Beads
- 1 package 1372H 24" Quick Crimp Necklace Chain w/Crimp Beads

## Tools needed:

ruler, crimping tool (2019) Note: you can use any jeweler's pliers to close crimp beads, but the result will look much nicer if you use a real crimping tool.

### Step 1:

Every Elements® bead package is different! This means that every package is full of creative possibilities for making truly unique jewelry. Select beads from your pack to make a pleasing, random necklace. Lay them out in the desired order.

### Step 2:

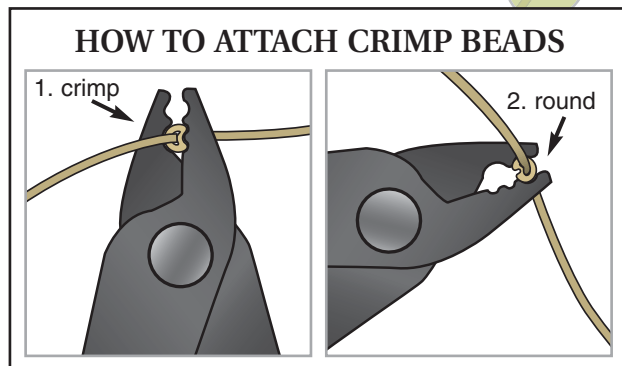
Unfasten the chain clasp by pulling gently apart. String crimp beads and Elements® beads onto the straight end of the chain. Each bead will have two crimp beads, one before and one after it on the chain.

### Step 3:

Slide the first crimp bead down to 1½" (4 cm) or so from the end of the chain. Squeeze the crimp bead in place as shown. Slide the first bead snugly in place next to the crimp bead. Slide next crimp bead in place and squeeze to secure.

### Step 4:

Continue fastening crimp beads to hold beads in place at intervals along the chain. That's it! You are done, and there are beads left over for bracelets, earrings, or more necklaces. This technique works with all sizes and styles of jewelry beads, so have fun! See how creative YOUR jewelry fashions can be.



www.thebeadery.com

PS0904

©2009 Greene Plastics Corporation

Choose from among these beautiful Elements® color coordinates. For even more variety, make jewelry using beads from more than one color family!



X1476H506  
Jet



X1476H507  
Jade



X1476H508  
Earth



X1476H510  
Asian Spice



X1476H511  
Pink



X1476H512  
Montana Blues



X1476H513  
Amethyst



X1476H566  
Pineapple Quartz



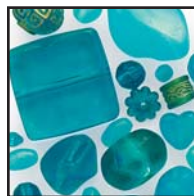
X1476H567  
Aqua



X1476H568  
Cherry Quartz



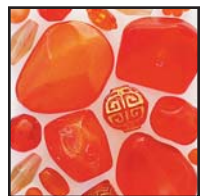
X1476H569  
Ice



X1476H652  
Teal



X1476H653  
Emerald



X1476H683  
Citrus